

# Discover Tiree

## Visitor Guide 2022



# welcome fàilte

The Isle of Tiree is the most westerly island of the Inner Hebrides. It is relatively small - about twelve miles long and three miles wide - and very flat. Although the name means 'the land of corn' it has been described variously as 'a raised beach' and 'the land below the waves'.

The island has a mild climate with some of the highest levels of sunshine recorded anywhere in the British Isles. It benefits from the moderating influence of the Gulf Stream ensuring that frost is rare and evenings in mid-summer are warm and balmy.



# About Us



Discover Tiree is run by Tiree Community Development Trust with the aim of providing a 'one stop shop' of information for anyone planning to visit the island.

Initially established in 2003 as an independent association of businesses and individuals engaged in tourism, Discover Tiree is the Destination Management Organisation (DMO) for the Isle of Tiree and has over 110 members with the website receiving over 100,000 hits each year.

Discover Tiree became an initiative within Tiree Community Development Trust in 2019, this relationship ensures that the local community is at the forefront of our work, and that we promote responsible tourism that is benefit to both visitors and residents.

Working with the Ranger Service (also hosted by the Trust in Tiree) we provide information and advice for visitors through producing a range of helpful and informative colour brochures, books and maps. These are available from our island information office and various locations around the island, as well as from the Ranger. You can also keep up to date with island information on our Discover Tiree social media platforms.





# chat to a friendly local

Drop by the Tiree Visitor Centre to have a chat with our staff who are enthusiastic about sharing their local knowledge and helping with any questions you may have.

## Tiree Visitor Centre

Units 1 & 2 The Island Centre,  
Crossapol PA77 6UP

phone | 01879 220074

email | [admin@tireetrust.org.uk](mailto:admin@tireetrust.org.uk)

web | [www.isleoftiree.com](http://www.isleoftiree.com)

## Opening Hours

Monday - Saturday 10am-4pm

## Facilities at the Centre

- 📶 Free Wifi
- 📄 Leaflets and Brochures
- 📍 Information Point

## Find our Socials

@discovertiree



We would love for you to share your island experience with us! Upload your photo online and tag us or use the #discovertiree so we can see the highlights of your trip!



# Contents

2

**About our Island**

3

**Eat, Drink and Shop**

4

**Walks**

5

**Explore Below the Waves**

6

**Get Outdoors**

7-11

**Eating and Drinks**

12

**Shops**

13-14

**Arts, Crafts and Gifts**

15

**Services**

16

**Tiree Ranger Activities**

17

**Gaelic Phrases**

18-19

**Events 2022**

20-23

**Places of Interest**

24

**Friends of Nàdair Thiriodh**

25

**Tiree Community Business**

26

**Out and About on Tiree**

27

**Using the Roads/Emergency Numbers**

28-29

**Useful Information**

30

**Contact Numbers**

31

**Map**



Photo credits to Stephanie Cope

# About our island

Tiree is a working island that welcomes responsible visitors. The different landscape types found on the island - machair, grasslands, dunes and sliabh - are managed by islanders and form an important part of their farming and crofting operations. Damage to grazings results directly in reduced income to islanders, so please be careful when travelling around the island.

We have a very fragile but beautiful environment in Tiree with protected areas of special significance. These does not stand up to continued use by motor vehicles and can become damaged very quickly. Tiree is also well known for its wildlife, in particular the many species of birds that are found here. At certain times of the year we have many ground nesting birds, which can easily be disturbed by vehicles, we ask that you take care and follow the advice found later in this guide.



# Eat, Drink and Shop

\*Please note that opening hours of businesses in the island may be subject to change

|                          |  |
|--------------------------|--|
| Aisling's Kitchen        | 07557510330  |
| Beachcomber Cafe         | 01879 220590   |
| Becky Bakes -Tiree       | <a href="mailto:beckybakestiree@gmail.com">beckybakestiree@gmail.com</a> |
| Blackhouse Watersports   | 07711 807976   |
| Bùth a' Bhaile           | 01879 220581   |
| Cafaidh Carrieanne's     | 01879 220555   |
| Chocolates and Charms    | 07880544384  |
| Co-operative Store       | 01879 220326   |
| Dorinda Johnson Gallery  | 01879 220590   |
| Dot Sim Studio           | 01879 220173   |
| Hebridean Roast          | <a href="mailto:info@hebrideanroast.co.uk">info@hebrideanroast.co.uk</a> |
| Isle of Tiree Distillery | 07591005871  |
| Pols Stained Glass       | 07855209512  |
| Scoops Seafood           | 07825655135  |
| The Calf                 | 07718251563  |
| The Farmhouse Cafe       | 01879 220107   |
| Tiree Beef and Lamb      | 01879 2201479   07721073049  |
| Tiree Lodge Hotel        | 01879 220329   |
| Tiree Scarinish Hotel    | 01879 220308   |
| Tiree Sea Tours          | 07765 422831   |
| Tiree Tea                | <a href="mailto:rhoda@tireetea.co.uk">rhoda@tireetea.co.uk</a>           |
| The Woolly Ferret        | <a href="mailto:thewoollyferret@gmail.com">thewoollyferret@gmail.com</a> |
| Wild Diamond             | 07712 159205   |
| Yellow Hare              | 01879 220440   |

# WALKS

The twelve walks in the "Tiree Walks" have been carefully chosen to give a taste of what's special about this small Hebridean island. Some of the walks take in favourite beaches and destinations such as Balephuill, Balevullin and The Maze, The Ringing Stone and Happy Valley - others encourage the walker to explore less well-known parts of the island such as Caolas, Greenhill and Hough. Each walk takes you through a range of different habitats from coastal strand to machair and sliabh. Each walk is accompanied by a clear map, a detailed description of the route and wildlife notes outlining what you may be able to see during the walk at different times for the year.

The book is available from the Tiree Ranger, the Tiree visitor centre, or from shops and outlets in the island. There is also general walking access to fenced and unfenced land in line with the Scottish Outdoor Access Code. The Tiree Ranger, who will be out and about most days in different parts of the island, will be more than happy to help with questions about the island - particularly walking, wild camping, access and parking.





# EXPLORE BELOW THE WAVES



## **Blackhouse Watersports • Balevullin • 07711 807976**

Learn to surf on beautiful Balevullin beach. Using our beach hut as your base you will have access to super friendly instructors and a wide range of excellent surfboards and wetsuits. Beginner lessons through to advanced, suitable for all ages. Kitesurfing lessons available using a range of North kites. Bike rental with FOCUS Whistler 29 inch bikes- delivery to your accommodation.

✉ [iona@blackhouse-watersports.co.uk](mailto:iona@blackhouse-watersports.co.uk)

🌐 [blackhouse-watersports.co.uk](http://blackhouse-watersports.co.uk)

📘 Blackhouse Watersports | [@blackhousewatersports](https://www.facebook.com/blackhousewatersports)

## **Wild Diamond• Cornaig • 07712 159205**

Tiree's original and most established watersports business. We offer courses and hire for Windsurfing, Surfing, Body Boarding, Stand Up Paddleboarding, & Kitesurfing as well as kayaking (hire only) all around Tiree's coastline. Visit our shop and booking office at Loch Bhasapol. Almost all of our activities are roving and can be based anywhere on Tiree's coastline, depending on conditions on the day. Please note that all of our activities are weather dependent.

✉ [info@wilddiamond.co.uk](mailto:info@wilddiamond.co.uk)

🌐 [wilddiamond.co.uk](http://wilddiamond.co.uk)

📘 Wild Diamond Tiree | [@wilddiamondwatersports](https://www.facebook.com/wilddiamondwatersports)

🕒 Spring/Autumn | Monday - Saturday 10am-12pm  
Summer | Monday - Sunday 10am - 5pm

# GET OUTDOORS



## **Tiree Fitness and Bike Hire • Sandaig • 07867304640**

Quality bike hire, sales, servicing and coaching - Scottish Cycling affiliated and based on Tiree all year round. We have bikes for the whole family, offering ladies, gents and kids bikes as well as hybrids, Kona mountain bikes, tag-alongs and even a tandem. Delivery provided. Call or email to arrange your bikes.

✉ [will@tireefitness.co.uk](mailto:will@tireefitness.co.uk)

🌐 [tireefitness.co.uk](http://tireefitness.co.uk)

📘 Tiree Fitness | [@tireefitness](https://www.facebook.com/tireefitness)



## **Tiree Sea Tours • Crossapol • 07788810623**

Based at Tiree Airport, we offer visits to the Treshnish Isles, Fingal's Cave, Iona and Skerryvore Lighthouse with opportunities to see dolphins, porpoises, basking sharks, seals, orca and puffins. Other trips available - wildlife spotting, circumnavigate Tiree, lunch at Coll, afternoon in Tobermory.

\*\*New for 2020- Car Hire, and gift shop on site\*\*

✉ [tireeseatours@gmail.com](mailto:tireeseatours@gmail.com)

🌐 [tireeseatours.co.uk](http://tireeseatours.co.uk)

📘 Tiree sea tours | [@tireeseatours](https://www.facebook.com/tireeseatours)

🕒 Monday - Saturday 9am-4pm  
Sunday 9am - 12pm

# EATING AND DRINKING

## Aisling's Kitchen • Crossapol

We're really passionate about delicious food & even better service. Our country style kitchen offering has an honest, fresh and wholesome food approach with a strong focus on ethically and locally sourced produce, (from croft & creel), whilst ensuring that customer satisfaction is at the heart of what we do.

☎ 07557510330

✉ [aislingskitchen@outlook.com](mailto:aislingskitchen@outlook.com)

📘 Aislings Kitchen at the Cobbled Cow | @AislingKitchen

🕒 Please check online for current opening hours



## Becky Bakes - Tiree

Homemade bakes and celebration cakes. Tray bake gift boxes and cakes for any occasion can be ordered during your stay or before you arrive for free delivery to your holiday let.

☎ 01879 220590

✉ [beckbakestiree@gmail.com](mailto:beckbakestiree@gmail.com)

🌐 [www.beckyakestiree.com](http://www.beckyakestiree.com)

📘 Becky Bakes - Tiree

🕒 Open seven days a week. Pick up by arrangement.





## Chocolates and Charms • Heylipol

We are a shop selling handmade chocolates and handcrafted jewellery all made on the island.

☎ 07880544384

✉ info@chocolatesandcharms.co.uk

🌐 chocolatesandcharms.co.uk

📘 Chocolates and Charms | @chocolatescharms

🕒 Mon, Weds, Fri, Sat | 12pm - 4pm



## The Farmhouse Cafe • Balemartine

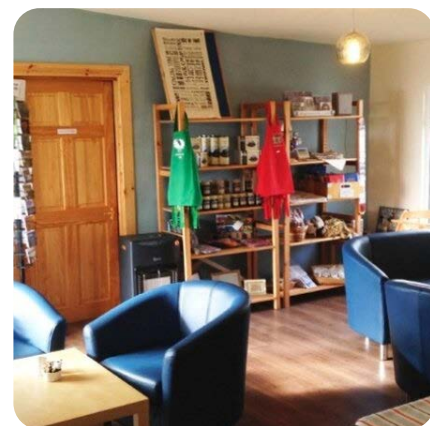
The cafe is situated in a newly renovated barn in the centre of the township of Balemartine. The light, airy sun lounge has open views towards Ben Hynish. We offer a selection of speciality coffees, home baking and light lunches - and a children's menu. There is also a selection of gifts for sale.

☎ 01879 220107

✉ fiona.armstrong1@btopenworld.com

📘 Farmhouse Cafe | @cafeontiree

🕒 Monday - Saturday | 11am – 4pm





## Hebridean Roast • Scarinish

Hebridean Roast provides fresh, high quality, speciality grade coffee, which is carefully sourced and hand roasted in small batches in Scotland. Available direct from our shop in Scarinish on Tiree, or online.

✉ info@hebrideanroast.co.uk

🌐 www.hebrideanroast.co.uk

📘 Hebridean Roast | @hebrideanroast

🕒 Varies - check website



## Isle of Tiree Distillery • West Hynish

Home to one of the smallest, most traditional whisky production operations that Scotland has to offer.

☎ 07591005871

✉ info@tireewhiskycompany.com

🌐 tyreegin.co.uk

📘 Isle of Tiree Distillery | @tireedistillery

🕒 Monday - Saturday | 11am – 5pm





## Tiree Beef and Lamb • Ruaig

Locally sourced beef and lamb is available from A & I MacInnes, Ruaig Farm

☎ Alastair 07721 073049 | Iain 07733 110732

📘 Tiree Beef, Lamb and Pork

🕒 Monday - Saturday | 2-3pm or by appointment



## Tiree Lodge Hotel • Gott Bay

The hotel overlooks the magnificent sandy beach at Gott Bay with magnificent sea views towards Mull, Iona, Jura and Colonsay.

☎ 01879 220329

✉ info.reservations@tireelodge.co.uk

🌐 tireelodge.co.uk

📘 Tiree Lodge Hotel | @tireeluggers

🕒 Please check online for current opening hours



## Tiree Scarinish Hotel • Scarinish

Nestled by the old harbour beside a sandy beach with magnificent sea views towards Mull and Iona.

☎ 01879 220308

✉ info@tireescarinishhotel.com

🌐 tireescarinishhotel.com

📘 Scarinish Hotel | @tireescarinishhotel

🕒 Please check online for current opening hours



## Yellow Hare • Gott Pier

At Gott Pier, opposite Calmac ferry terminal. Drinks and light meals served all day. Real coffee, speciality teas, smoothies, our own home baking, light lunches - toasted BROSS bagels and Yellow Hare soda-bread toasties. Great gifts. Also cold drinks and Tiree ice cream. Vegetarian, vegan, gluten-free options.

☎ 01879 220440

✉ coffee@yellowhare.co.uk

🌐 yellowhare.co.uk

📘 Yellow Hare | @yellowharetiree

🕒 Core hours 9.45am-4pm

Open 7 days May-Oct



## Want your island business to feature in the 2023 Visitor Guide?

Become a member of Discover Tiree to have your own listing on our website, visitor guide and map!

☎ 01879 220074

✉ discovertiree@tireetrust.org.uk

🌐 isleoftiree.com

📘 @discovertiree



# SHOPS

## Bùth a' Bhaile

We are an independent, licensed general store and newsagent with an instore bakery. We sell a wide range of fresh and frozen provisions as well as children's toys, electricals, novelties and hardware as well as wines and spirits.

☎ 01879 220581

✉ [elainetrinity@hotmail.co.uk](mailto:elainetrinity@hotmail.co.uk)

📘 Buth a' Bhaile

🕒 Monday - Saturday | 8am - 6pm  
Sunday - FROM APRIL TO OCTOBER |  
12noon - 5pm



## Co-operative Store • Scarinish

The store has a wide range of fresh and chilled foods and a large selection of fruit and vegetables. There is an in-store bakery and many Fairtrade items.

☎ 01879 220326

✉ [membershipcontactus@coop.co.uk](mailto:membershipcontactus@coop.co.uk)

🕒 Every Day | 7am - 10pm  
Please note: Closed on delivery days between 1 and 3pm (Monday, Wednesday, Friday, ferry permitting)







# ARTS, CRAFTS AND GIFTS

## Dorinda Johnson Gallery • Scarinish

The studio gallery of artist Dorinda Johnson, overlooking the old harbour, selling original paintings, prints and pottery as well as art cards.

☎ 01879 220590

✉ [dorinda@dorindajohnson.co.uk](mailto:dorinda@dorindajohnson.co.uk)

🌐 [www.dorindajohnson.co.uk](http://www.dorindajohnson.co.uk)

🕒 Check website for regularly updated opening times



A ceramic image "Migration" by Dorinda Johnson

## Dot Sim Studio • Caolas

Jeweller Dot Sim's designs are inspired by starry skies, stormy seas, swirling seaweed, shifting sands, flotsam and jetsam, and the minutiae found in rock pools.

☎ 07906002896

✉ [dotdotsim@gmail.com](mailto:dotdotsim@gmail.com)

🌐 <https://www.dotdotsim.com>

🕒 Thurs & Fri | 11am-5pm

Other times by appointment - please phone to arrange.



## Tiree Art Studio

Small but perfectly formed working art studio. Home of BauenArt.

☎ 01879 220542

✉ tireeartstudio@gmail.com

🌐 <https://tireeartstudio.com/>

📘 Tiree Art Studio | @TireeArtStudio

🕒 From April 2022, check Facebook page for details



Millhouse Blue, Mixed Media on Wood, 100 x 70 cm

## Annual Summer Art Show

### Tiree Art Exhibition • Baugh

Tiree Art Exhibition was established in 1992 by Tiree Art Enterprise with the aims of stimulating local interest and involvement in the visual arts and promoting artistic activity of residents of the islands of Tiree and Coll.

✉ lizykerr@yahoo.co.uk

🌐 [tireearts.org.uk](http://tireearts.org.uk)

📘 Tiree Art Enterprises

🕒 See website for 2022 dates





# SERVICES

## John Kennedy Taxis • Crossapol

Taxi service, minibus and coach hire. Island tours. Ring 'n' Ride Service operated by Argyll & Bute Council. All journeys must be booked in advance.

☎ 01879 220419

✉ info@johnkennedytransport.co.uk

- 🕒 Mon | 8.30am - 6pm
- Tue | 8.30am - 8.30pm
- Wed | 8.30am - 6pm
- Thu | 8.30am - 6pm
- Fri | 8.30am - 6pm
- Sat | 8.30am - 6pm



## TORAZ Vehicle Rental • Crossapol

Car , van and 4x4 hire with a fleet of vehicles for all budgets. We also offer caravan and motor home hire. Our gift shop is open 7 days and is packed with beach and island themed gifts

☎ 07788810623

✉ hello@toraz.co.uk

🌐 tireseatours.com

📘 TORAZ | @toraz.tiree

- 🕒 Monday - Friday | 9am - 4pm
- Saturday | 9am - 12pm



# TIREE RANGER ACTIVITIES

Tiree has its very own ranger, Hayley. This year we are doing things a wee bit differently and going bespoke! We are pleased to say that you can book Hayley for your own experience in the island with activities available for family groups or adults.

Activities can include rock-pooling, otter tracking, or learning about seaweeds, but vary depending on what you fancy doing.

Guided walks for example can be to Kenevara, the ringing stone, or to look for otters and seals and birdlife. All depending on your abilities and what you would like to do.

So, if you fancy having a guided walk to many of our sites on the island, or having a family activity then please get in touch.

Email: [ranger@tireetrust.org.uk](mailto:ranger@tireetrust.org.uk)

Phone: 07391239502

**All COVID-19 Guidelines will be adhered to.**

# USEFUL GAELIC PHRASES

**Tìriodh**  
**(Cheer-ugh)**  
Tíree

**Abair latha**  
**(a-baar laa)**  
What a day

**Ciamar a tha thu?**  
**(Key-mar a ha oo?)**  
How are you?

**Madainn mhath**  
**(Ma-ting vaa)**  
Good morning

**Feasgair math**  
**(Face-grr maa)**  
Good afternoon

**Mòran taing**  
**(More-an tang)**  
Thank you

**Càit' a bheil ...?**  
**(Caa-ch a veil ...)**  
Where is

**Taigh-bìdh**  
**(Tai-bee)**  
Restaurant

**Bùth (Boo) Shop**

**Bàta-aiseig**  
**(Baa-ta-ash-hick)**  
Ferry

**Port-adhair**  
**(Pour-st-aa-hair)**  
Airport

**Tràigh**  
**(Try)**  
Beach

**Muir (Moo-er) Sea**

# 2022 EVENTS

FEIS THIRIODH



30th April

TIREE AGRICULTURAL SHOW



8-10th July

TBC for 2022

4-8th July



TIREE 10K & HALF MARATHON

15 July



TIREE MUSIC FESTIVAL



TIREE REGATTA

TIREE ART EXHIBITION



4th September

SEA CHANGE FILM FESTIVAL



8-14th October

For more information about events visit our website [isleoftiree.com](http://isleoftiree.com)

TBC for 2022

23rd-25th September



TIREE ULTRAMARATHON



WAVE CLASSIC



# PLACES OF INTEREST

The Isle of Tiree may be known for its beautiful landscapes and amazing scenes but it is also an island steeped in history and cultural significance. There is a vast amount of historic landmarks still remaining on the island from the Iron Age to War Time.





### **An Iodhlann • Scarinish**

The island historic centre. Since 1995 it has been collecting artefacts and photographs of times past. An exhibition tells the story of the island and its people, and there are fascinating objects and artefacts on display. There is also help on hand to trace family roots.



### **Ben Hough • Hough**

The summit of Ben Hough, 119m, provides panoramic views of the whole island and beyond to the outer islands. The concrete steps to the right of Hough House lead to the summit observation post which was part of the RAF presence on Tiree during WWII.



### **An Turas • Scarinish**

An Turas, Gaelic for 'the journey', is an award winning installation situated adjacent to the CalMac pier office. This building won the prestigious 'Stirling Prize - Scottish Building of the Year' in 2003. Walking through it gives the complete island experience from the impression of a pier to a black roofed house, with vistas of shore and sea.



### **Ben Hynish • West Hynish**

The summit, which is the highest point on the island at 141m, offers wonderful views of the whole island and the Skerryvore Lighthouse to the south-west. The 'Golf Ball', which sits at the top of the hill, is an important civil aviation radar station which scans the skies two hundred miles out into the Atlantic. It was built in 1985. There is no public road access.



### **Dùn Mòr Bhalla - Vaul Broch • Vaul**

This is the best example of a broch on Tiree and the only one that has been excavated. It is believed that the broch was built in about 60AD, initially as an emergency refuge and stronghold, and then inhabited for 200-300 years. Originally the broch had a double wall with an inner staircase leading to two or three galleries.



### **Happy Valley • Hynish**

Happy Valley, probably named by an airman during WWII, is found in the south-west of the island about 1km from the township of Hynish. A prehistoric fort, Dùn na Cleite, occupies the southern end of the rocky ridge above the valley and is regarded as one of the strongest, naturally created, defensive sites on the island.



### **Hynish Centre • Hynish**

The buildings at Hynish were started in 1837 and comprised a dock, workshops and lodgings for those involved in the building of the Skerryvore Lighthouse. One of the listed buildings in Hynish is home to 'The Story of Skerryvore Lighthouse' exhibition. This exhibition records the fascinating account of the construction of the tallest lighthouse in Scotland by Alan Stevenson, uncle of Robert Louis Stevenson. Visitors to Hynish can also enjoy the Treshnish Isles natural history exhibition.



### **Kilkenneth Chapel • Kilkenneth**

Now in ruins, this church building probably dates from the late Middle Ages. With its dedication to St Kenneth, a contemporary of St Columba, it may have replaced earlier, less substantial structures on this site. St Kenneth is said to have lived on Tiree in the late 6th century and to have accompanied St Columba on a mission to the Inverness area to convert King Brude to Christianity.



### **Loch a' Phuill • Balephuill**

Loch a' Phuill is the largest of the lochs on Tiree and supports a particularly diverse aquatic plant flora and also several species of pondweed. Loch a' Phuill is one of the best examples of a coastal eutrophic loch - rich in mineral and organic nutrients.



### **Kirkapol Chapels • Kirkapol**

Situated behind Tiree Lodge Hotel, and accessed from a track leaving the hotel car park, these ancient chapels are both dedicated to St Columba. The smaller ruin dates from the 13th century. The larger ruin, which dates from the 14th century, is the former parish church and stands in its own graveyard where many ancient and interesting burial stones are still visible.



### **Loch Bhasapol • Cornaig**

This is the second largest loch on Tiree situated in the north west of the island. Two small islands in the loch may be crannogs. A crannog is a type of ancient loch-dwelling found throughout Scotland and Ireland dating from 5,000 years ago. Many crannogs were built out in the water as defensive homesteads and represented symbols of power and wealth.

# FRIENDS OF NÀDAIR THIRIODH



Friends of Nàdair Thiriodh is a membership organisation dedicated to preserving and conserving the internationally protected landscape of the Isle of Tiree.

We believe that this Hebridean island has some of the most spectacular and precious landscapes in Scotland.

Please help us to protect and conserve the natural beauty of these landscapes for the benefit of visitors, local communities, wildlife and habitats.

**TO FIND OUT MORE, OR TO BECOME A MEMBER, PLEASE CONTACT US BY TELEPHONE OR EMAIL**

## **Friends of Nàdair Thiriodh**

Tiree Community Development Trust | 01879 220074

Tiree Ranger | 07391239502

[friends@tireetrust.org.uk](mailto:friends@tireetrust.org.uk)

[www.friendsoftiree.org.uk](http://www.friendsoftiree.org.uk)

# TIREE COMMUNITY BUSINESS

Tiree Community Business (TCB) has been operating in the Island since 1995, and is run by 7 volunteer directors as well as employing an office building manager and remote editor.

TCB are based at the Island Centre, a community building that is owned by the organisation, and of which, some units are leased out to Argyll and Bute Council, Screen Argyll, Tiree Community Development Trust and the Scottish Government.

TCB run the island newsletter An Thirisdeach and other projects like the public toilets in Scarinish and the play park in Crossapol.

## Public Toilets in Scarinish

TCB took over the upkeep of the public toilets in Scarinish in 2021. In order to cover the cleaners wages and the consumables TCB kindly ask for donations when using these facilities.



## Play Park in Crossapol

The community play park in Crossapol is equipped and maintained by TCB.

Donations would be welcome in the money box to help with the maintenance of this well used and loved community park.



# Out and About on Tiree

## Motorised Vehicles

Motorised vehicular access is permitted only on public roads, unless it is an emergency, a motor vehicle specifically for a disabled person or on official croft business.

Motorised vehicular access or parking away from public roads and road verges, on croft tracks, unfenced land and beaches, is permitted only if authorised by the landowner.

When you park a vehicle it is important not to cause any damage or create an obstruction, so please ensure you: leave the entrance to a field or building clear; do not obstruct a road or track; have regard for the safety of others; try not to damage the verge; use a car park if one is nearby.

## Public Toilets

Public toilets are located at the Rural Centre and in Scarinish. There is also a water tap and a chemical disposal point by the public toilets in Scarinish.

## Waste Disposal

- Please dispose of litter responsibly
- Please avoid damaging grass by not lighting camp fires on grassland
- When waiting for the ferry, dog owners are asked to use the dog waste facilities which are situated behind the Calmac office

## Parking

By using the marked parking areas around the island, you are helping us protect our environment and wildlife for future generations to enjoy. Please do not park in pockets on the road.

## Emergency Services

In Tiree, most emergency services - the ambulance, fire service and coastguard - are staffed by volunteers. Along with the island's doctor and nurses, they use their own vehicles during emergency 'call-outs', driving with their headlights on and their hazard warning lights flashing. If you see such a vehicle, pull over as quickly as you can at the next passing place.

# Using the Roads

All roads in the island carry the national speed limit so be aware that some people may be driving faster than others. You should always allow faster vehicles to overtake. On single track roads you should pull into or stop at the next lay-by to allow the faster traffic to pass.

Passing places take practice! If you see an approaching vehicle, indicate and pull into the next available passing place on the left-hand side. Wave and smile! If the next passing place is on the opposite side of the road, indicate and stop opposite the passing place. Never drive across the road to wait in a passing place on the right-hand side.

The recommended safe passing distance between a car and a bicycle is 1.5 metres (5 feet), ideally more – especially on windy days or on uneven roads. Single-track roads do not allow enough space for this. Car drivers and cyclists should therefore wait at a passing place rather than trying to squeeze past each other on the road.

## Emergency Numbers

### **Doctors' Surgery**

Baugh - 01879 220323

### **Police**

Non Emergency 101

### **Fire, Police, Ambulance, Coastguard**

999 or 112

### **Vet**

Anne Stanley - Kenovay 01879 220571 or 07769 332912

# USEFUL

# INFORMATION

## POST OFFICES

**Scarinish Post Office • Scarinish • 01879 220301**

OPEN - Monday, Tuesday, Wednesday, Friday | 9am - 5.30pm • Closed 1pm - 2pm  
Thursday | 9am - 1pm and Saturday | 9am - 12.30pm

**Buth A' Bhaile Post Office • Crossapol • 01879220581**

OPEN - Monday-Saturday 8am-6pm

## CYCLE HIRE

**Tiree Fitness Bike Hire • Sandaig • 07867 304640**

**Blackhouse Watersports • Balevullin • 07736 330829 or 07711 807976**

## GARAGE AND FUEL SERVICES

**Tiree Car Hire • Pierhead • Scarinish • 01879 220555**

## CHURCHES

**Baptist Church • Rev Alan Millar • 01879 220915**

**Church of Scotland • 01879 220377**

**Siloam • Colin Woodcock • 01879 220510**

We are a small, open and informal home-based group who are committed to exploring simple ways of living out our Christian faith in our everyday lives.

## BANK

**Royal Bank of Scotland • Scarinish • 01879 220307**

OPEN - Monday, Tuesday, Friday | 10am - 4pm

Closed each day 12.30pm - 1.30pm



### **Ring and Ride • Crossapol • 01879 220419**

Tiree has a Ring n' Ride service provided by Argyll & Bute Council. This service is available on demand anywhere on the island between 7am and 6pm Monday to Saturday. Anyone can use this service. To book a journey contact Angus- John MacKechnie.

### **Tiree Rural Centre • Crossapol • 01879 220677**

Currently Closed due to Covid-19 please call for more information

### **Tiree Community Business • Crossapol • 01879 220520**

OPEN -Monday - Friday | 12.30pm - 4.30pm

Email | [tireecommunitybusiness@btconnect.com](mailto:tireecommunitybusiness@btconnect.com)

Offer a wide range of office facilities including colour photocopying, passport photos and laminating. Also sells local Tiree books.

### **An Tirisdeach • Community Newsletter • 01879 220520**

An Tirisdeach is the fortnightly newsletter written and produced on the island. It is available from the two main shops on the island and by post, or download, through an annual subscription.

### **Tiree Community Development Trust • Crossapol • 01879 220074**

The Island Centre - Currently Home based - Monday - Friday | 9am - 4pm The Trust was formed in March 2006 and is owned and managed by Tiree's community. It represents a community led approach to rural development promoting the sustainable, environmental, economic and social development of Tiree.

### **RSPB • John Bowler • 01879 220748**

If anyone would like to report unusual sightings of birds or other wildlife on Tiree, please contact John Bowler by telephone.

### **Waste Disposal and Recycling • Gott Landfill Site**

Monday 7.30am - 9am | 3pm - 4pm

Tuesday 10am - 11am

Wednesday 2pm - 4pm

Thursday 2pm - 4pm

Friday 7.30am - 9.30am | 2.30pm - 3.30pm

Saturday 9am - 1pm

Sunday Closed

# Contact Numbers

## Health Services

|   |                             |
|---|-----------------------------|
| Doctors' Surgery - Baugh                    | 01879 220323                |
| Dental Surgery - Baugh                      | 01879 220708                |
| District Nurse - Health Centre - Baugh      | 01879 220500                |
| Eventide Home - Tigh an Rhuda - Scarinish   | 01879 220407                |
| Vet - Anne Stanley - Kenovay                | 01879 220571 / 07769 332912 |
| Optometrist - John Bottomley - Rural Centre | 01879 220633 / 07769 852432 |

## Transport Services

|  |              |
|--|--------------|
| CalMac Pier Office - Scarinish                 | 01879 220337 |
| Airport - Booking - Crossapol                  | 01879 220309 |
| Airport - Lounge Coin Box                      | 01879 220634 |
| Ring and Ride Service - Crossapol              | 01879 220419 |
| John Kennedy Transport Taxi - Crossapol        | 01879 220419 |
| Car Hire - MacLennan Motors - Scarinish        | 01879 220555 |
| Car Hire - TORAZ Vehicle Rental - Crossapol    | 07788810623  |
| Fuel and Garage - MacLennan Motors - Scarinish | 01879 220555 |

## Post Office

|                              |              |
|------------------------------|--------------|
| Main Post Office - Scarinish | 01879 220301 |
| Buth A' Bhaile- Crossapol    | 01879 220581 |

## Churches

|                                     |              |
|-------------------------------------|--------------|
| Baptist Church - Rev Alan Millar    | 01879 220915 |
| Church of Scotland                  | 01879 220377 |
| Siloam Home Church - Colin Woodcock | 01879 220510 |

## Public Services

|   |              |
|---|--------------|
| An Tirisdeach - Island Newsletter                                 | 01879 220520 |
| An Talla - Community Hall - Crossapol Business Centre - Crossapol | 01879 220655 |
| Tiree Community Trust - Crossapol                                 | 01879 220520 |
| Tiree Rural Centre - Crossapol                                    | 01879 220074 |
| Tiree Ranger Service - Crossapol                                  | 01879 220677 |
|   | 01879 220074 |



## Fàilte do Thiriodh! Welcome to Tiree!

In the Isle of Tiree there is something of interest for all visitors, however young or old. The beautiful beaches provide miles of potential sandcastles, gently sloping paddling pools, and windsurfing for the more adventurous. Tiree's history and architecture capture the imagination revealing bygone ages, and the abundance of birds and other wildlife will keep naturalists engrossed for many an hour. And if all you want to do is walk then you've come to the perfect place!

One of the many things that makes Tiree great is the people that live here! Tiree is a working island and we kindly ask that you respect the community when visiting.

# Isle of Tiree Visitor Map 2022



## Landmarks

1. An Turas
2. An Iodhlann Museum
3. Rural Centre
4. Children's Playground
5. An Talla Community Hall
6. Balinoe Graveyard
7. Skerryvore Lighthouse Exhibit
8. Treshnish Isles Exhibit
9. Happy Valley
10. Golf Ball
11. Bird Hide
12. Temple Patrick
13. Kenevara
14. Kilkenneth Chapel
15. Bird Hide
16. Old Mill

## Things to Do

17. Ringing Stone
18. Dun Mor Broch
19. Golf Course
20. Community Turbine
21. Milton Harbour
22. Chapels

## Services

- Public Transport**  
Ring and Ride Service | 01879 220419
- Car Hire**  
Tiree Car Hire | 01879 220555  
TORAZ Car Hire | 07788810623
- Bike Hire**  
Blackhouse Watersports | 07711 807976  
Tiree Fitness | 07867304640

|                |
|----------------|
| Public Toilet  |
| Water          |
| Chemical       |
| Waste Disposal |

# Notice to Island Visitors from Tiree Medical Practice

Please ensure you bring all medication with you on your trip to the island. Our medical practice is small and we only carry limited stock, therefore may not have the specialist medication you require immediately available. We are also closed to walk in appointments so please dial 01879220323 for any enquiries. Also note there are no lateral flow collection points on Tiree, you must bring your own tests with you if required or order them online during your visit.

## Opening Hours:

Monday 9-5

Tuesday 9-12

Wednesday 9-5

Thursday 9-5

Friday 9-5



Scan the QR Code or visit  
<https://www.isleoftiree.com/visitor-guide>  
to view the guide online!